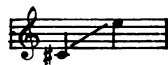


Seven Songs from THE PILGRIM'S PROGRESS

Dedicated to Bryan Drake

1. WATCHFUL'S SONG (Nocturne)



Words from the Book of Psalms
and the Book of Isaiah

R. VAUGHAN WILLIAMS

Lento moderato (♩ = 60)

Voice

Piano *pp*

cantabile

In-to thy

hands, O Lord, — in-to thy hands, — O Lord — I com-mend my —

Note: This is a concert version of the song, and differs considerably from that given in the Morality 'The Pilgrim's Progress' by the same composer.

Copyright Oxford University Press 1952

First publication of the songs in one volume, 1993

© Oxford University Press 1993

OXFORD UNIVERSITY PRESS, MUSIC DEPARTMENT, WALTON STREET, OXFORD OX2 6DP

Printed in Great Britain

Photocopying this copyright material is ILLEGAL.

spir - - it, in-to thy hands, O Lord. In-to thy

Ex-cept the Lord keep the house

the watch-man wak - eth but in vain. The Lord hath poured out up - on

you the spir - it of deep peace: the whole earth is at rest and is

qui - et. In-to thy hands, O Lord, I com-mend my

pp

Poco meno lento

spir - - it, in-to thy hands, O Lord.

p

sempre tranquillo

I will lift up mine

eyes un-to the hills from whence com-eth my help.

(*d = d*)

My help com-eth ev - en from the Lord who hath

made — heaven and earth. — He will not suf - fer thy

foot to be moved. He that keep - eth thee shall not —

sleep. — Be - hold, — he that keep - - eth thee —

— shall neith-er slum - - ber nor sleep. —

The Lord him - self is my keep - er, he shall preserve thee from

all ev - il: yea, it is ev - en he that shall

keep thy soul from this time

forth for ev - - er more: from this time forth for

ev - er more.

R.H.

Tempo primo

pp

In - to thy hands I com-mend my spir-it, in - to thy hands, - O

Lord.

pp