

SYMPHONY No. 3

I
3rd Horn in F. Bokustav Martinu

Allegro poco moderato. (♩ = 100)
18

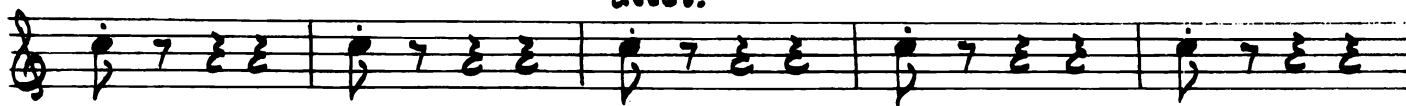
1 4 *Vln. I:*

Bsn: 3 *Poco animato.*

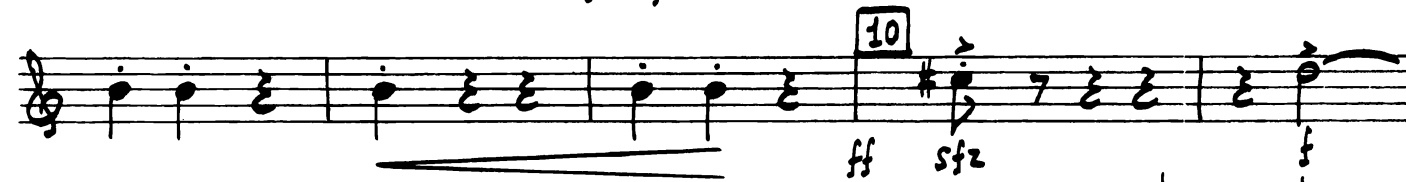
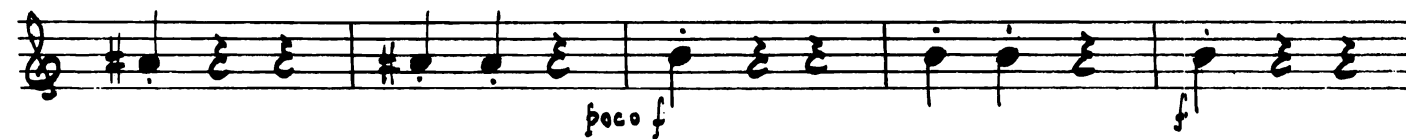
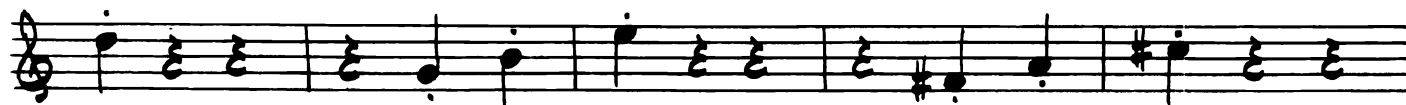
4 4

5

accel.



Poco più animato.



V.S.

Picc: 11 2

12 7 13 Pno:

poco a poco accel.

Allegro con brio.

14

2 15 3 *poco a poco rit.* 11

1 Rit: 1 3 *Allegro poco moderato.* 18

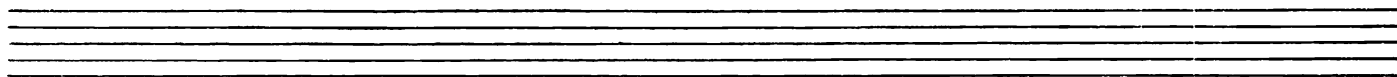
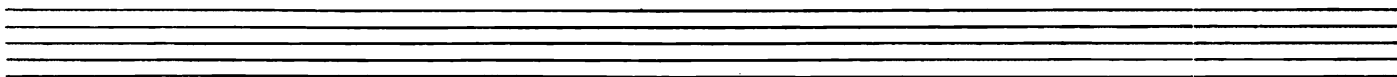
16 4 Vn. 1:

17 6 Bsn:

18 Poco animato. mf

19 4 V.S. f

Allargro vivo.



II



Largo. (♩=54)

6 4 Hn. 3: Senza Sord.

7

mf

mf

f

mf

8

mf

f

f

f

9

6

1

10

Cz. 1: Con Sordino.

mf

mp

11

12

mp

mp

mp

Allegro (♩=132)

f

10

1 Hn.1:

mf

2

3 Poco meno. 12

Hns. 1/2:

4

5 Tempo I.

6

2

V.S.

7

f cantabile.

8

ff

VI- 8 -DE 9 10 Hn.3:

mf

11

mf

Roco rit. 12 Andante (♩=116)

Vla: Con Sordini.

13

Simile.

ff

2 3 14

pp

3 1

15 7 16 3 H.n.:

pp

17 7 Senza Sord. 18 Andante poco moderato.

6 19 1

mf f

20 Largamente (Andante) mf

f

f cant. 21 5

2 ob.: #d. Con Sordini. 7

Con Sordini. 2

pp