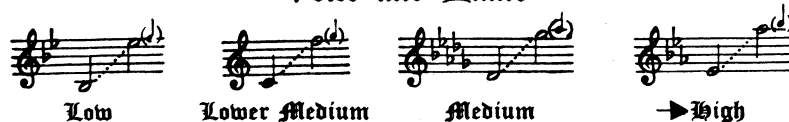


The Lord's Prayer



By
Albert Hay Malotte

→ Voice and Piano



Voice and Organ

Low, in B \flat Medium, in D \flat High, in C \flat

→ Price, 50 cents

Piano Solo Violin and Piano

Price, 50 cents

Choral Versions

Octavo Number		Price
7945	Mixed Voices, 4 Parts, with Organ.....	.15
8685	Mixed Voices, 4 Parts, Soprano or Tenor Solo (<i>a cappella</i>).....	.12
7988	Men's Voices, 4 Parts, with Piano.....	.15
8208	Men's Voices, 4 Parts, Tenor Solo, with Piano.....	.15
8647	Men's Voices, 4 Parts, Tenor Solo, with Organ (Latin Text).....	.16
7987	Women's Voices, 3 Parts, with Piano.....	.12
8743	Women's Voices, 2 Parts, with Piano.....	.12
8968	Women's Voices, 4 Parts, with Piano (<i>a cappella ad lib.</i>).....	.15

(Prices apply to U. S. A.)

G. Schirmer, Inc.
 New York

Recordings

- Victor Record No. 1736, *sung by* John Charles Thomas**
- Victor Record No. 2187, *sung by* Helen Traubel**
- Victor Record No. 4535, *sung by* Igor Gorin**
- Victor Record No. 16781, *sung by* Gladys Swarthout**
- Columbia Record No. 70369, *sung by* Nelson Eddy**
- Decca Record No. 18303, *by* Fred Waring's Glee Club and
his Pennsylvanians**

The Lord's Prayer

Albert Hay Malotte

Lento, religioso

ppp

Voice

Our Fa - ther, _____

sempre legato

Piano

ppp
r.h.
2 Ped. 3 3 3 Ped.

pp

which art in heav - en, _____

pp
Ped. Ped. Ped. Ped.

pp

Hal-low - ed be _____ thy

rit.

pp
rit.
Ped. Ped. Ped.

Copyright, 1935, by G. Schirmer, Inc.

International Copyright Secured

Printed in the U. S. A.

a tempo *accel.* *poco più mosso*
p

Name. _____ Thy king - dom

a tempo *pp* *accel.* *poco più mosso*
p

2 *ped.* * *ped.* *

mp *p*

come. Thy will be done in

p *mp* *poco cresc* *p*

ped. * *ped.* * *ped.* *

p *Tempo I°* *p*

earth, As it is in heav - en.

pp *p* *p*

ped. *ped.* *ped.*

L'istesso tempo

p

pp molto espressivo e sempre legato

*

pp

Give us this day our

pp

right

p

p

poco accel.

p

dai - ly bread. And for - give us our debts, — As

tres - pass - es As

p

p

poco accel.

p

hand

l.h.

red.

*

ral-len-tan-do

a tempo

we _____ for-give our debt - ors.
we for-give those who tres-pass a - gainst us.

a tempo
pp < *p*

ral-len-tan-do

Red. * *Red.* *

p <

mf

And lead us not in-to temp-ta - tion; But de - liv - er us from

p < *mp*

mp

mf

Red. *

Poco meno mosso, e sonoramente

mf rit.

f

e - vil: For thine is the king - dom, _____ and the

mf rit.

f

Red.

Red.

Red.

pow - er, _____ and the glo - ry, _____ for

ten. *ff*

ten. *ff*

ten. *ff*

ev - er. _____ and A - - er. A -

f

f

f

men. _____

men. _____

mf *p*

mf *p* *pp*

ppp

ral - len - tan - do e morendo

SONGS

by

ALBERT

HAY

MALOTTE

Dreamer

Albert Hay Malotte

Don Blasing*

Andante

dos - wop - pose I'll ev - er see A dry - ad slip - ping from her tree, Nor

Meno

hear the pull - ing pipes of

Andante

Al - though at times I

Meno

think I can, Nor who the moon sympho - nize dance at

*From "Napoleon's Mass" Copyright, 1929, by Don Blasing, published by Dodd, Mead & Company, Inc. Printed by permission. Copyright, 1929, by G. Schirmer, Inc.

Contrary Mary

Albert Hay Malotte

Nancy Byrd Turner*

Tempo

Voce You ask why Ma - ry was called con - tra - ry Well this is why, my

Tempo

Al - ways some - ing the queerest mood, and when ad - vised to - stop - Her answer was more - ly

Tempo

Vo, in - deed! Just wait till you see the crop!

*From "Zodiac Signs," by Nancy Byrd Turner, an Atlantic Monthly Press publication. Reprinted by permission of Little, Brown and Company. Copyright, 1929, by G. Schirmer, Inc.

THE BEATITUDES. High, E Minor; Low, C Minor	.50
C'EST L'AMOUR. Medium or High, F	.50
CONTRARY MARY. High, E	.50
DAVID AND GOLIATH. Medium, D Minor	.90
THE DREAMER. Medium or Low, E \flat	.75
FOR MY MOTHER. High, F; Medium, E \flat ; Low D \flat	.50
A LITTLE SONG OF LIFE. Medium, D	.50
THE HOMING HEART. High or Medium, D	.50
THE LORD'S PRAYER:	
High, E \flat ; Medium, D \flat ; Lower Medium, C; Low, B \flat	.50
Also published for Voice and Organ	
High, E \flat ; Medium, D \flat ; Low, B \flat	.50
Oct. No.	
7943 4-part mixed chorus (With Organ)	.15
7988 4-part men's chorus (With Piano)	.15
7987 3-part women's chorus (With Piano)	.12
8208 4-part men's chorus, Tenor Solo (With Piano)	.15
THE LOVER. High, D; Low, B \flat	.50
SING A SONG OF SIXPENCE. Medium, F	.50
THE SWASHBUCKLER'S SONG. Medium or High, F	.75
THE TWENTY-THIRD PSALM. High, G; Medium, F; Low, E \flat	.50
UPSTREAM. Medium, B \flat Minor	.50

The Lord's Prayer

Albert Hay Malotte

Poco meno mosso, e sonoramente

o - vil: For thine is the king - dom, and the

ow - er, and the glo - ry, for

ev - er.

Copyright, 1929, by G. Schirmer, Inc.

The Twenty-Third Psalm

Albert Hay Malotte

Voce *Slowly, quasi andante pastorale J. 72*

Piano

Largo

Lord is my shep - herd, I shall not want

Tempo J. 72

Copyright, 1929, by G. Schirmer, Inc. International Copyright Secured. Printed in the U. S. A.

The Lover

Albert Hay Malotte

From anonymous

Tempo 1 $\text{^o$

lift mine eye to thy beam - ty And bid - od, I turn

way, To tread in the pres - ence of thy

ev - er and

Copyright, 1929, by G. Schirmer, Inc.

G. SCHIRMER, Inc.
NEW YORK