

Скрипка IV

КВАРТЕТ ДЛЯ ЧЕТЫРЕХ СКРИПОК

I

Г. БАЦЕВИЧ

Allegretto

1 2 3 4 5

6 7 8 9 10 11

12 13 14 15 16

1 4 3

pp

p

mf *cresc.* *f*

ff *Allegro giocoso*

2 1 2

1 2

3

p leggiero

с 2423 к

Скрипка IV

6 Poco meno

7

8

Скрипка IV

9

arco

mf

V V V V II

cresc. *f*

10 Poco meno

p

III V

pp

mf

11 Allegro giocoso

mf

V V V V V V V V

12

p leggiero

Скрипка IV

Musical staff with notes and 'v' markings above.

13

Musical staff with notes and 'v' markings above.

Musical staff with notes, 'v' markings, and fingerings (0, 2, 2).

14

Musical staff with notes, 'sul D', 'p dolce', and fingerings (I, 3, 3, III, 2, 3).

Musical staff with notes and fingerings (4, 0, 2, 1, 1, 0, 0).

15

Musical staff with notes, 'pizz.', 'mf', and fingerings (I, 3, I).

Musical staff with notes and 'dim.' marking.

16

Musical staff with notes, 'arco', 'III', and fingerings (1, 2, 2, III).

Musical staff with notes and 'cresc. e accel.' marking.

cresc. e accel.

II

Andante tranquillo

pp espressivo

1

pp

2

mf

3 II

mf pizz.

I

arco

p f III

Скрипка IV

4 sul tasto
pp

rit.

5 a tempo
nat.

f

6

7

8

dim. *pp perdendosi*

III

Molto allegro

ff *mf*

V *spicc.* 1 1 4 3 2 *cresc.*

1 *ff* *mf* *cresc.*

2 *f p* *f*

3 4 4 *p en dehors*

III 3 *p en dehors*

2 2 *cresc.* III *f*

V 4 0 2 0 *mf*

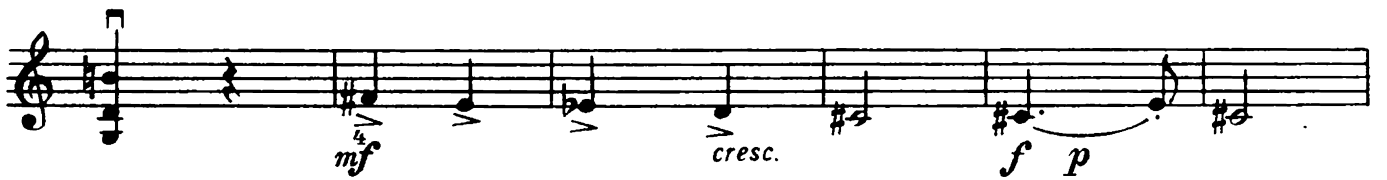
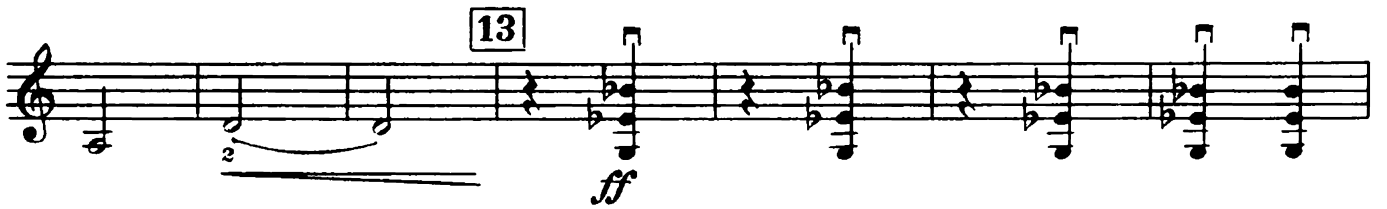
Скрипка IV

Musical score for Violin IV, measures 5-9. The score is written on a single staff in G major (one sharp) and 4/4 time. It features various musical notations including slurs, accents, and dynamic markings.

- Measure 5:** Starts with a half note G4, followed by quarter notes A4, B4, C5, D5, E5, F5, G5. A box labeled "5" is above the G5. A *mf* dynamic marking is below the staff.
- Measure 6:** Continues with quarter notes G5, F5, E5, D5, C5, B4, A4, G4. A *p* dynamic marking is below the staff.
- Measure 7:** Features a series of eighth notes: G4, A4, B4, C5, D5, E5, F5, G5, F5, E5, D5, C5, B4, A4, G4. A box labeled "7" is above the staff. A *ff* dynamic marking is below the staff.
- Measure 8:** Starts with a half note G4, followed by quarter notes A4, B4, C5, D5, E5, F5, G5. A box labeled "8" is above the staff. A *f* dynamic marking is below the staff.
- Measure 9:** Continues with quarter notes G5, F5, E5, D5, C5, B4, A4, G4. A box labeled "9" is above the staff. A *cresc.* dynamic marking is below the staff.

Additional markings include fingerings (0, 1, 2, 3, 4, 5), bowings (V), and trills (trill I, trill II, trill III) in various measures.

Скрипка IV



Скрипка IV

f

15

mf

16

pp

cresc. *f*

allarg. *a tempo*

17

18

cresc. *ff*

f

III

f *ff*