

Violin 1

BENEDICITE

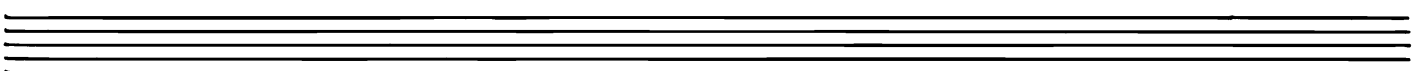
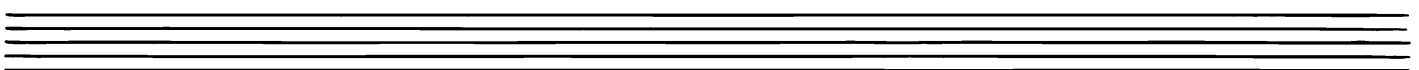
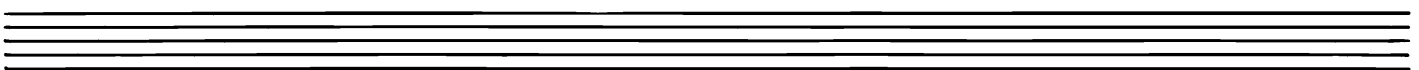
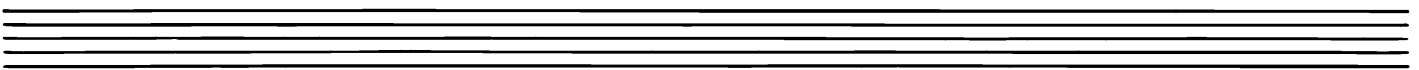
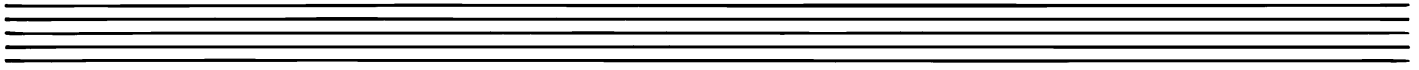
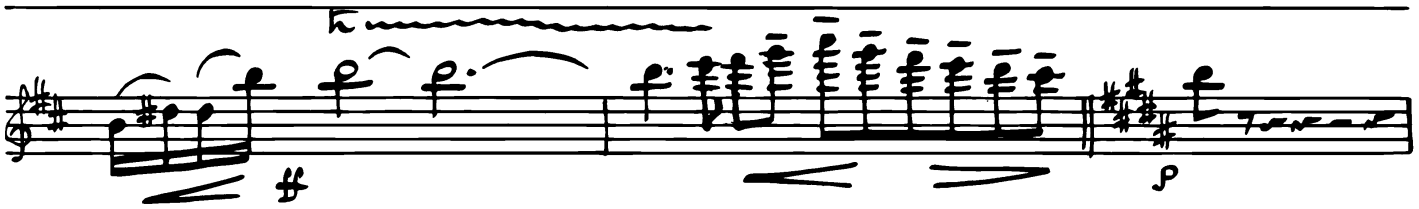
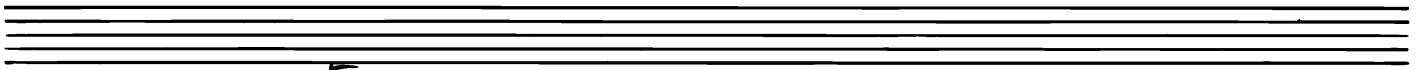
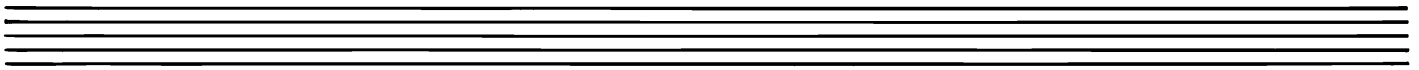
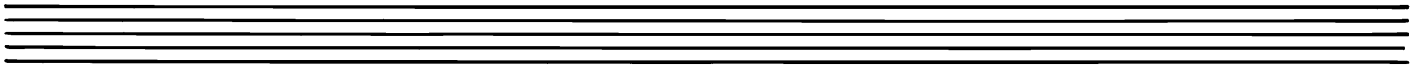
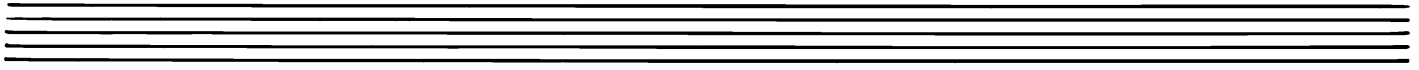
R. Vaughan Williams

Andante con moto

more.
f
p

A
more.
f

Vln. 1.



Vln. 1

Handwritten musical score for Violin 1, page 4. The score is written on ten staves in treble clef with a key signature of one sharp (F#). It features various musical notations including dynamics (p, pp, trem.), articulation (accents, slurs), and performance instructions (B, #). The music includes melodic lines, chords, and complex rhythmic patterns.

Staff 1: Melodic line starting with a half note G4, followed by eighth notes. Dynamics: *p*. Includes slurs and accents.

Staff 2: Chordal accompaniment with eighth notes. Dynamics: *p*. Includes slurs and accents.

Staff 3: Chordal accompaniment with eighth notes. Dynamics: *p*. Includes slurs and accents.

Staff 4: Melodic line with eighth notes. Dynamics: *p*. Includes slurs and accents.

Staff 5: Chordal accompaniment with eighth notes. Dynamics: *p*. Includes slurs and accents.

Staff 6: Chordal accompaniment with eighth notes. Dynamics: *p*. Includes slurs and accents.

Staff 7: Chordal accompaniment with eighth notes. Dynamics: *p*. Includes slurs and accents.

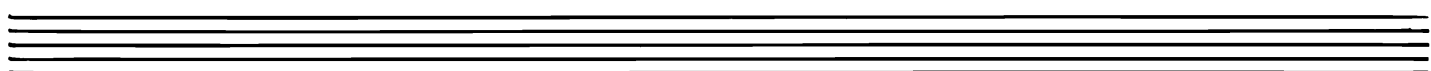
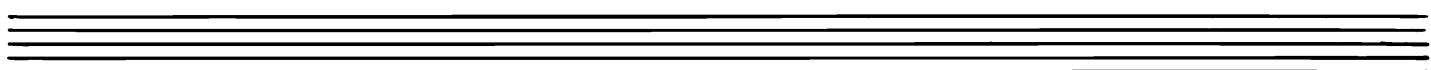
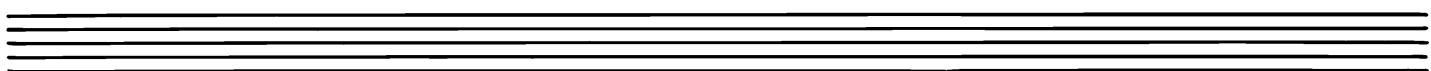
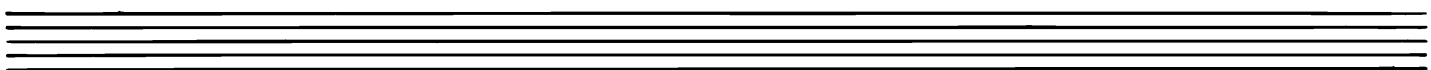
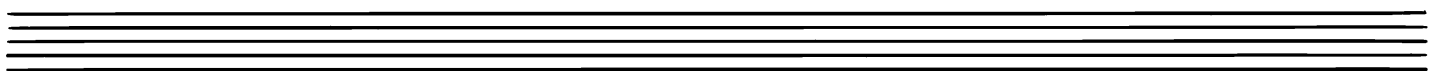
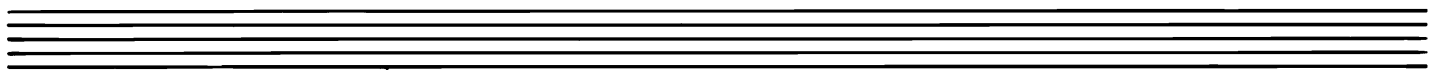
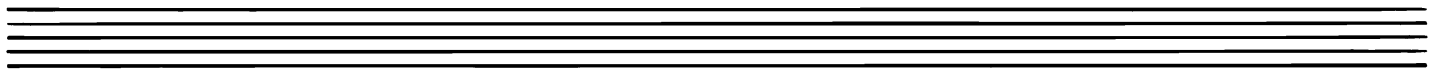
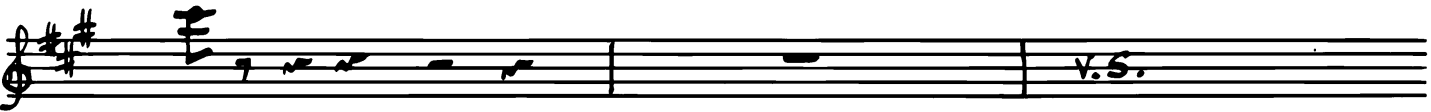
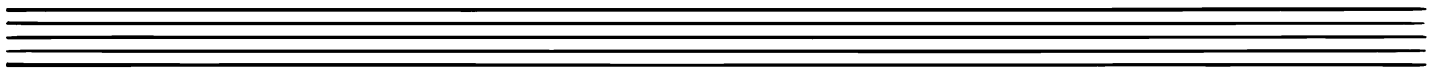
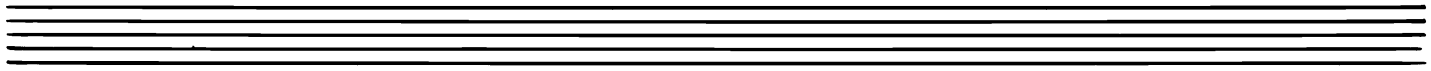
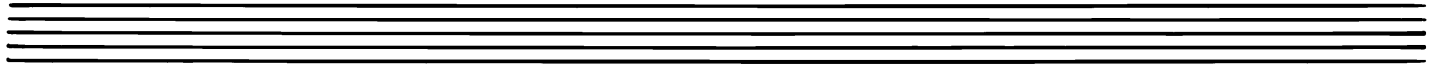
Staff 8: Melodic line with eighth notes and triplets. Dynamics: *p*. Includes slurs and accents.

Staff 9: Melodic line with eighth notes. Dynamics: *pp*. Includes slurs and accents.

Staff 10: Chordal accompaniment with eighth notes. Dynamics: *pp*. Includes slurs and accents.

Vln 1

5



Handwritten musical score for Violin 1, page 6. The score consists of 11 staves of music. It begins with a treble clef and a key signature of two sharps (F# and C#). The first staff contains a series of chords. The second staff features a melodic line with the instruction "dir." above it, followed by a section with "p" and "trill" markings. The third staff is marked with a circled "C" and contains a series of chords with "p" dynamics. The fourth staff continues with chords and a melodic line. The fifth staff has a melodic line with "p" and "cresc." markings. The sixth staff includes a section marked "sul G" and "p". The seventh staff contains a melodic line with "p" and "trill" markings. The eighth staff is a double bar line. The ninth staff is marked with a circled "D" and contains a series of chords with "p" dynamics. The tenth staff continues with chords and a melodic line, with "sim." and "Risoluto" markings. The eleventh staff concludes with a melodic line and "p" dynamics.

v

f

rit. mod.

7

5

rit. mod.

f

E

more.

5

5

5

vra. ff

rit.

f

f

rit.

f

v.s.

F Sop. Solo

o let the Earth bless the Lord

pp

mf

f

pp

9

6

F

ad lib.

(Voices)

pp

div.

mus.

pp

crac.

dim.

dir

rh. 1.

mis

PPP

Sop. Solo

(senza misura)

o let the Earth bless the

Poco meno mosso

PPP

pizz.

pp

K Moderato

15

L Sop. Solo

Each a dou - - -

- - ble - ri - bute

4

v. S.

arco

M

p

pp

p

Voices (ad lib.)

2

arce.

pizz.

f

arco

ff marc.

O

ff marc.

ff

P

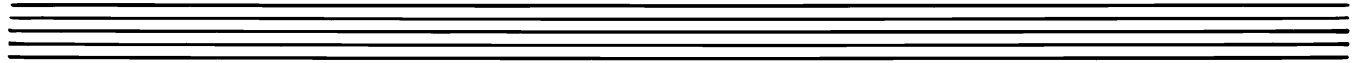
ff marc.

Vln. 1

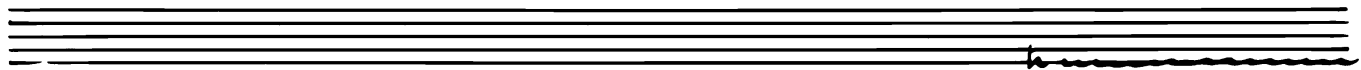
Tempo del principio

The musical score for Violin 1 on page 11 is written in G major (one sharp) and 6/4 time. It begins with a tempo marking of "Tempo del principio". The score is organized into ten staves, with some staves containing multiple systems of music. The first system (staves 1-2) features a melodic line with a dynamic of *p* and a complex chordal texture. The second system (staves 3-4) includes a dynamic of *ff* and a melodic line with a dynamic of *p*. The third system (staves 5-6) features a dynamic of *mf* and a melodic line with a dynamic of *f risoluto*. The fourth system (staves 7-8) includes a dynamic of *f risoluto* and a melodic line with a dynamic of *f risoluto*. The fifth system (staves 9-10) features a dynamic of *ff* and a melodic line with a dynamic of *rit.*. The score concludes with a double bar line and the instruction "v.s.".

rh. 1.

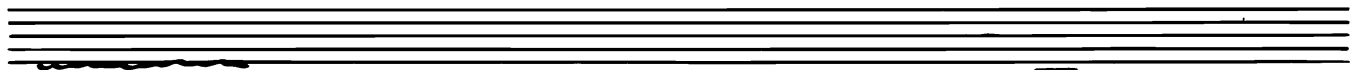


Musical staff with notes and dynamics. Dynamics include *pp*.



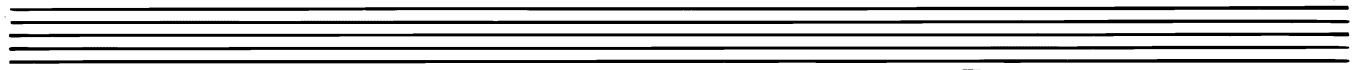
Musical staff with notes and dynamics. Dynamics include *pp* and *crise.*

dir



Two musical staves with notes, dynamics, and a boxed 'R' marking. Dynamics include *dir*, *sva*, and *fff*.

acc



Musical staff with notes and dynamics. Dynamics include *min*, *collu*, and *collu*.

