

10

RUSSIAN SAILOR'S DANCE

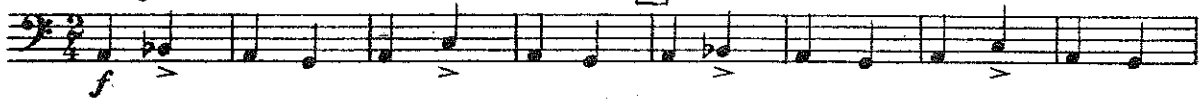
Op. 47
M. Clementi Symphony No. 2

BASSOON I

GLIERE

Allegro

5



10

15



20



25

I Pesante

30



35



40



45



III
50 Moderato

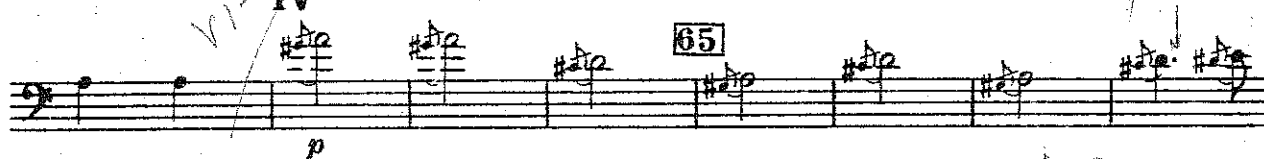
55



60



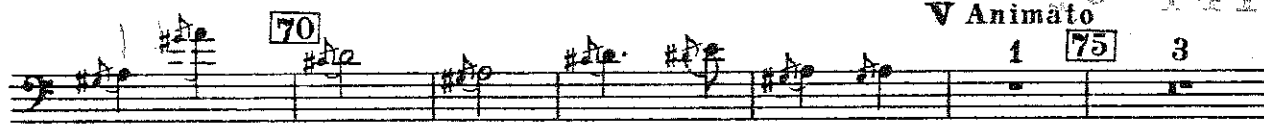
65



70

V Animato 9-141

1 75 3



BASSOONS I

80

85

VI Sostenuto poco

Slow

90

95

VII Più tranquillo

100

p *cresc.*

105

110

VIII Più mosso

f

115

BASSOON I



Musical staff with measure 120. The staff contains a series of eighth notes and a final measure with a slur over two notes.

IX Presto




Musical staff with measure 125. The staff contains a series of eighth notes with dynamic markings *sf* under each note.



Musical staff with measure 130. The staff contains a series of eighth notes.



Musical staff with measure 135. The staff contains a series of eighth notes. A handwritten "DIX" is written above the staff. The dynamic marking *marc.* is written below the staff.

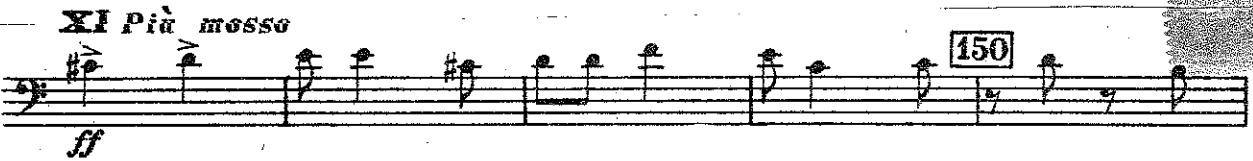


Musical staff with measure 140. The staff contains a series of eighth notes.



Musical staff with measure 145. The staff contains a series of eighth notes.

XI Più mosso

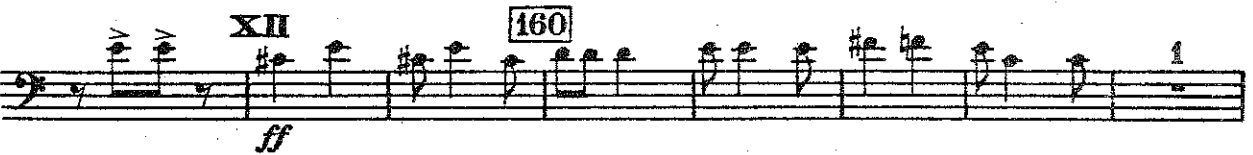


Musical staff with measure 150. The staff contains a series of eighth notes with dynamic marking *ff* at the beginning.



Musical staff with measure 155. The staff contains a series of eighth notes.

XII



Musical staff with measure 160. The staff contains a series of eighth notes with dynamic marking *ff* at the beginning.

BASSOONS I

165

170 Prestissimo

175

180

cresc.

ff

185

190

ff

195

ff

200

sf

11

RUSSIAN SAILOR'S DANCE

BASSOON II

GLIERE

Allegro

Musical notation for measures 5 through 25. Measure 5 is boxed. Measure 10 is boxed. Measure 15 is boxed. Measure 20 is boxed. Measure 25 is boxed. Dynamics include *f*, *cresc.*, and *ff*.

I Pesante

Musical notation for measures 30 through 35. Measure 30 is boxed. Measure 35 is boxed. Dynamics include *f*.

II

Musical notation for measures 40 through 45. Measure 40 is boxed. Measure 45 is boxed. Dynamics include *f*.

III Moderato

Musical notation for measures 50 through 60. Measure 50 is boxed. Measure 55 is boxed. Measure 60 is boxed. Dynamics include *p*. A handwritten "turn" is written above measure 60.

IV

Musical notation for measures 65 through 75. Measure 65 is boxed. Measure 70 is boxed. Measure 75 is boxed. Dynamics include *p*. A handwritten "cut to X" is written above measure 65. The section ends with a *V* section starting at measure 75, marked *Animato* with a first ending bracket.

BASSOONS II

80

f

85

VI Sostenuto poco

f

90

95

VII Più tranquillo

p

100

cresc.

105

VIII Più mosso

110

f

115

BASSOON II


120



IX Presto

125

sf *sf* *sf* *sf* *sf*

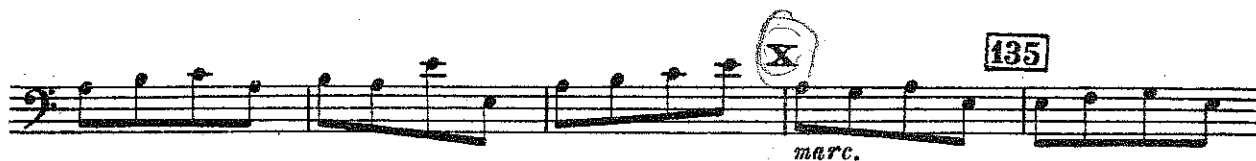


130



135

marc.



140



145



Vo

XI Più mosso

f



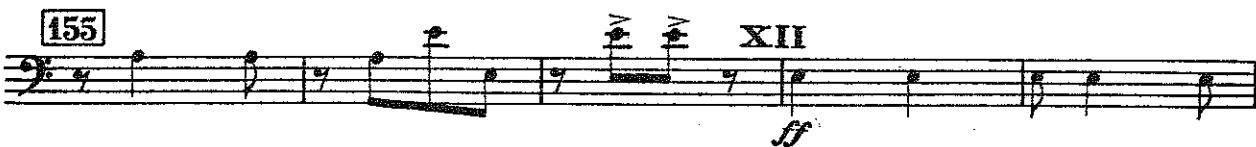
150



155

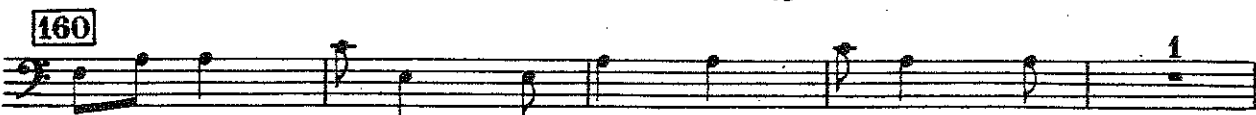
XII

ff



160

1



BASSOON II

165

170 Prestissimo

175

cresc.

180

185

190

195

200

RUSSIAN SAILOR'S DANCE

CONTRA BASSOON

GLIERE

I Allegro

II I Pesante

III Moderato

V Animato

VI Sostenuto poco

VII Più tranquillo

CONTRA BASSOON

105 **VIII** 110 Più mosso

p *f*

115

120 **IX Presto**

sf *sf*

125

130 **X** 1 135 5 140 5 145 1

sf *sf* *sf* *sf* *sf* *sf*

XI Più mosso 150

155 **XII** 160

ff

165

170 **Prestissimo** 175

f

180 *cresc.* 185

ff

190 5 195 5 200 4

sf