

SYMPHONISCHE MINUTEN

I. CAPRICCIO

Ernst von Dohnányi Op. 36.

CELESTA

Vivacissimo possibile

p Wirkliche Tonhöhe eine Octave höher: *f* 1 *p*

f 1 *p*

f 1 *f* 9 *f* 2

f 3 *f* 2 1

4 3 1 *mf* 1

CELESTA

5

6

7

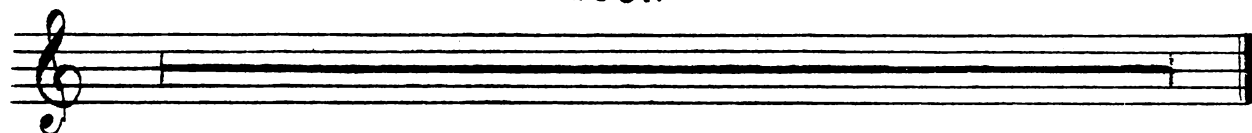
8

9

10

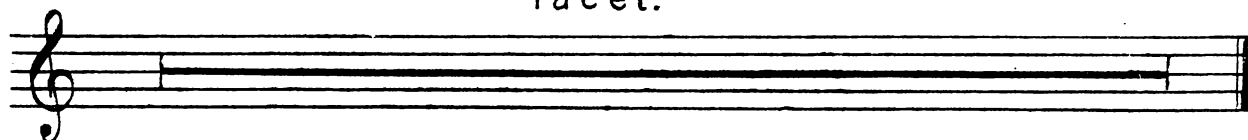
II. RAPSODIA

Tacet.



III. SCHERZO

Tacet.



IV. TEMA CON VARIAZIONI

Andante poco moto.

1

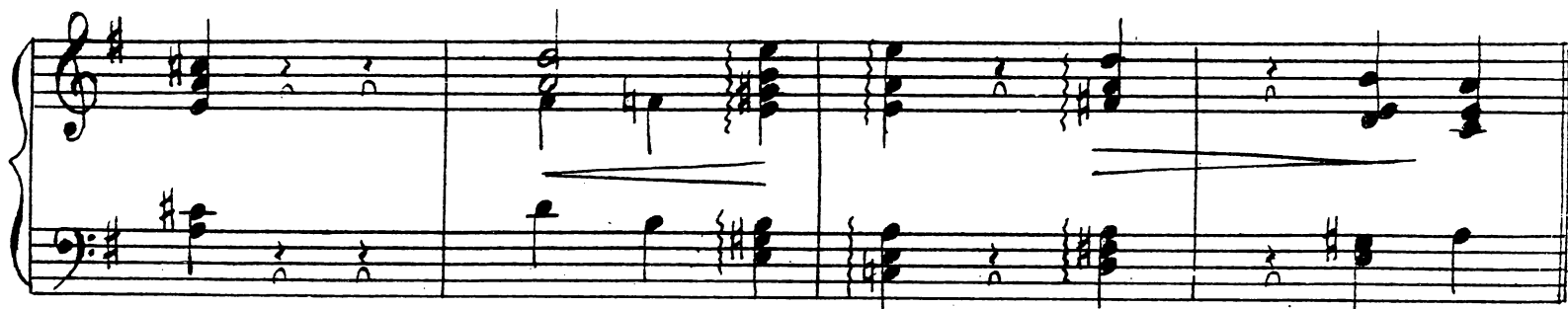
2

Poco più mosso.



3

Tranquillo.



CELESTA

4 5 *Appassionato* 6 7

pp

sempre pp

rit.

V. RONDO

Tacet.