

Douze chants et basses d'harmonie

FLORENT SCHMITT

I
Basse

Grave

p *mf*

Expr.

f dim.

Animez un peu

p *mf*

p *cresc.* *f*

Retenez **1er mouvt** *Expr.*

p

mf *dim.*

p *cresc.* *f*

Un peu élargi

dim. *p*

II
Chant

Calme, sans lenteur

Musical score for voice part II, Chant, measures 1-10. The score is written on a single staff with a treble clef and a key signature of three sharps (F#, C#, G#). The time signature is 3/4. The tempo/mood is 'Calme, sans lenteur'. The dynamics are marked as *p* (piano) at the beginning, *f* (forte) at measure 4, and *pp* (pianissimo) at measure 8. There are several triplet markings (*3*) and crescendo markings (*cresc.*). The phrase 'Expr.' (Expression) is written above the staff at measure 4. The score ends with a triplet and a *cresc.* marking at measure 10.

Elargissez un peu

Plus lent

Musical score for voice part II, Chant, measures 11-14. The score is written on a single staff with a treble clef and a key signature of three sharps. The tempo/mood is 'Elargissez un peu' (expand a little) and 'Plus lent' (slower). The dynamics are marked as *f* (forte) at measure 11, *p sub.* (piano subito) at measure 12, and *pp* (pianissimo) at measure 13. There are triplet markings (*3*) and a *cresc.* marking at measure 10. The score ends with a triplet and a *cresc.* marking at measure 14.

III
Basse

Modéré

Musical score for voice part III, Basse, measures 1-2. The score is written on a single staff with a bass clef and a key signature of three sharps. The tempo/mood is 'Modéré'. The dynamics are marked as *mf* (mezzo-forte) at the beginning and *p* (piano) at the end. There is a *dim.* (diminuendo) marking at measure 2.

V
Basse

Un poco maestoso

VI
Chant

Calme

poco cresc. *mf*

Retenez Au mouvt

pp

f *pp sub.*

cresc. *mf* *p*

f

dim. *pp*

VII
Basse

Modéré

p

cresc. *f*

f *pp*

dim.

Retenez un peu

Au mouvt

Un peu plus lent

**VIII
Chant**

Calme, sans lenteur

Retenez Au mouvt

mf *dim.*

En retenant

p

IX
Basse

Large

f

p *cresc.*

f

dim. *p*

cresc. *dim.* *p*

f

p *cresc.* *f*

p *cresc.*

f *ff*

X
Chant

Calme, sans lenteur

Pressez un peu

Au mouvt

XI

Basse

Modéré

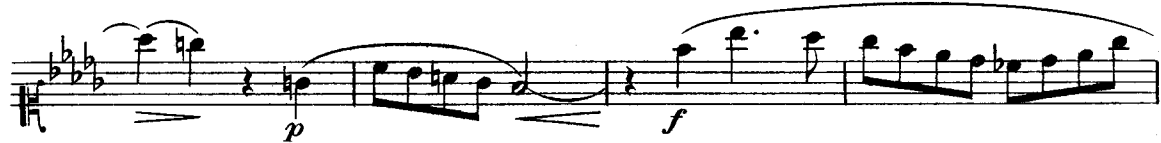


XII Chant

Lent



Animez un peu



Retenez

1er mouv^t (lent)



Retenez

