

FANTASIA FOR STRING TRIO

Viola

Part 2

IRVING FINE

M
351
FS6
F3
1959

Adagio ma non troppo $\text{♩} = \text{ca. } 54$

Solo

p espress. molto legato

10 Poco movendo

$\text{♩} = \text{ca. } 68$

p

poco a poco cresc.

20

Poco allarg.

Ritardando

f espress.

A tempo, poco più mosso $\text{♩} = 68$

30

mp espress. molto cantando

sempre espress.

sempre espress.

40

p poco accel. rit.

50

*pp
attacca*

Copyright © 1959 G. Schirmer, Inc.

All Rights Reserved International Copyright Secured Printed in U.S.A.
This work may not be reproduced or transmitted in whole or in part in any form
or by any means, electronic or mechanical, including photocopying or by any
information storage and retrieval system, without permission in writing from
the publisher.

Scherzo, Allegro molto ritmico ♩ = ca. 144

Violin

p marcato *sim.* *sim.* [60] *fp* *non legato*

cresc. *f* [70] *f* *sim.* *jeté* *p*

[80] *cresc.* *pizz.* *arco* *sfz* *mp*

sim. *fmp* *sim.* *fmp*

[90] *fmp* *cresc.* *f* *fp*

f *p* *cresc.* *sim.*

[100] *fmp* *sim.* *fmp* *cresc.*

110 *f* *sfp* *f*

120 *sim.*

130 *sempref* *sim.* *mj* *p* *mormorando*

140

150 *mp* *p* *mp*

p *mf* *p* *mf* *p*

160 *mf* *p*

mf

Detailed description: This page contains a musical score for the Viola part, spanning measures 110 to 160. The score is written in a single system with multiple staves. The key signature is one flat (B-flat), and the time signature is 3/4. The music features a variety of rhythmic patterns, including eighth and sixteenth notes, and rests. Dynamic markings include *f* (forte), *sfp* (sforzando piano), *mf* (mezzo-forte), *p* (piano), *mp* (mezzo-piano), and *mormorando* (murmuring). Performance instructions include *sempref* (sempre), *sim.* (simile), and *v* (accents). Measure numbers 110, 120, 130, 140, 150, and 160 are enclosed in boxes. The score concludes with a final measure containing a whole rest.

Viola

170

f 3

180

Violin *p*

mp *p* *mp*

190

cresc. *sim.*

200

sfz *ff* *f* *mp*

Violin *pizz.* *pizz. arco* (arco) *mor-*

sim. *morando*

220

p

mf sempre cresc. *f* *fp* *p*

Viola

230

sub. *p*

240

poco sub. *p poco a poco cresc.*

250

f Violin

sempre poco a poco cresc.

(Violin)

sub. *p*

260

poco *p*

270

mp cresc. *mf p cresc.*

280

sf sf sf sim. pizz.

290

f G.P. arco

300

f

310

ff sempre marcato

G.P.

Viola

320 *sim.*
sempre ff *ff*

330 *jeté*
p *f* *ff*

340 *cresc.*
sempre marcato decresc. *ff*

p *cresc.* 350

at the frog *ff* *f* 360 *sul pont.*

Violin *sempre sul pont. sim.* *mp* *p* *modo ord.* Violin

370 *sul pont. sim.* *mf* *modo ord.* *pp*

pizz. sfz *sfz* *sfz* 380 *Poco meno mosso*
 Cello *arco* *mfp*

G.P. *ff* *sfz* *sfz* *A tempo, poco precipitoso* Violin *mfp*

390 *Poco meno mosso* *p* 400 *pp*

mf *mp* *p* *pp*

Lento assai, tranquillo ♩ = ca. 54



p *espres. molto legato, ma chiaro*



pp *p* *no nuances*

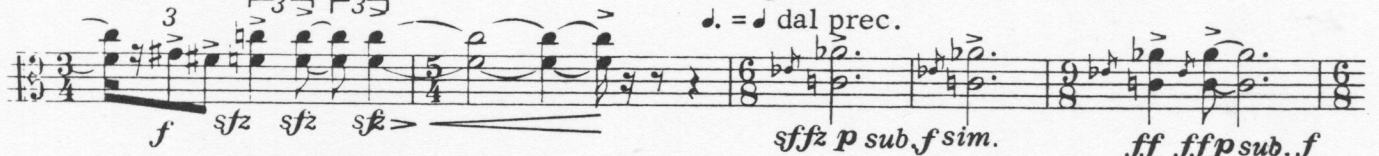
420



mf *sonore*

Agitato

♩ = ♩ dal prec.

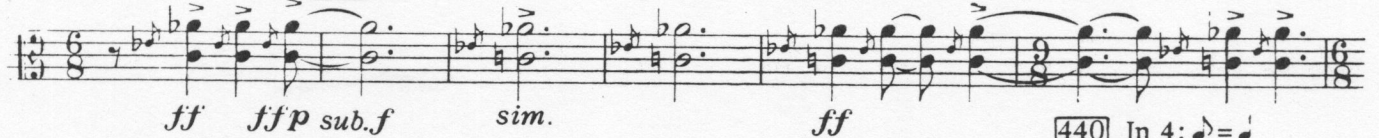


f *sfz* *sfz* *sfz*

sfz p sub.f sim.

ff ffp sub.f

430



ff

ffp sub.f

sim.

ff

440

In 4; ♩ = ♩ dal tempo primo



meno f

mf

mp

pp

poco rit.

Pespr. legato

ma poco più mosso (♩ = ca. 72)



poco f

p

450



poco fp

dim.

460



poco fmp

p

poco rit.

pp